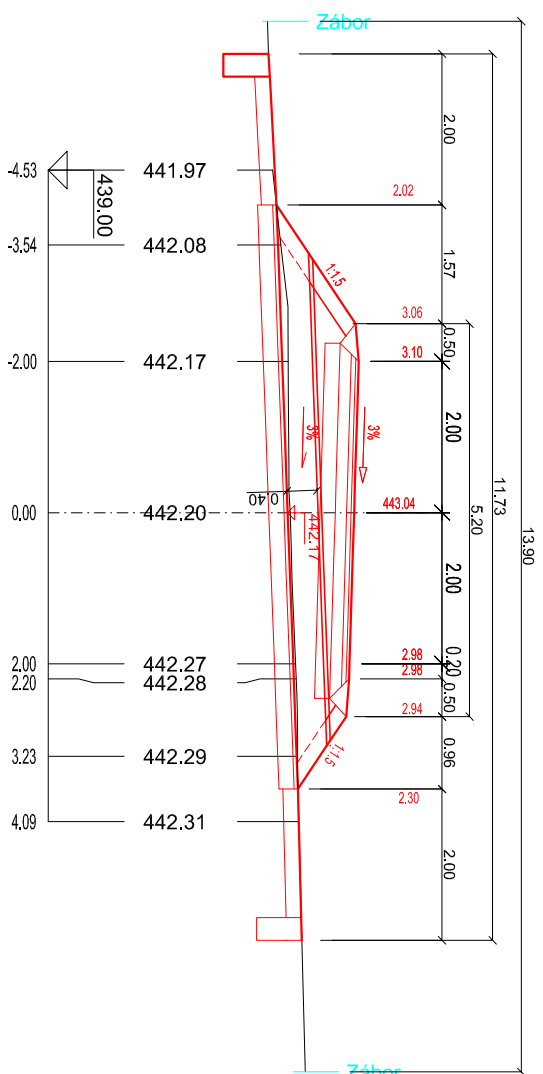
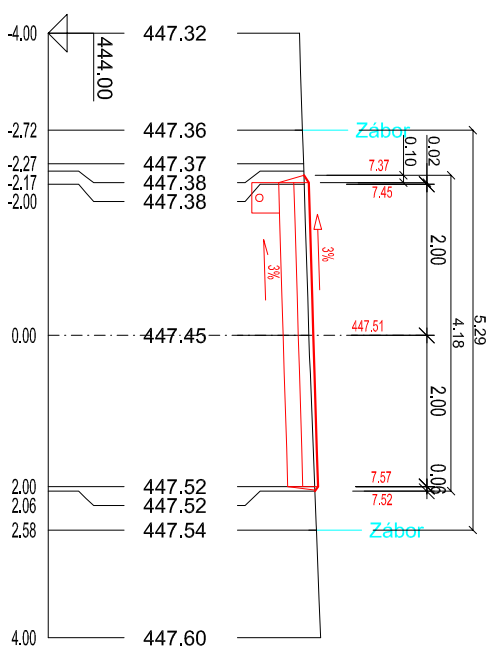


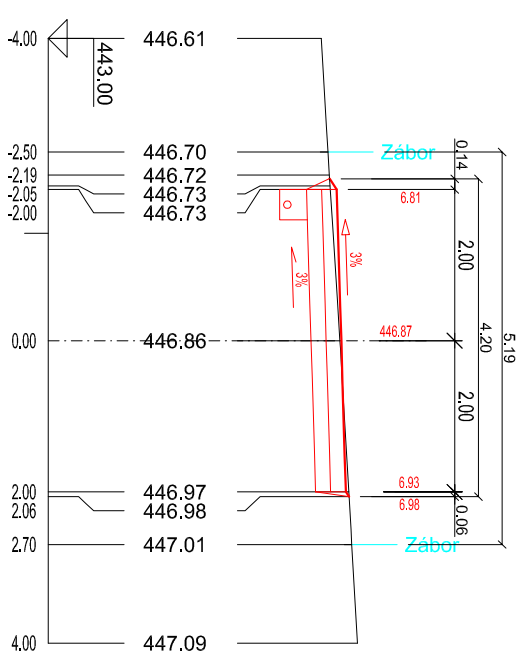
1 - KM 0.007 PROPUSTEK P8, DN400



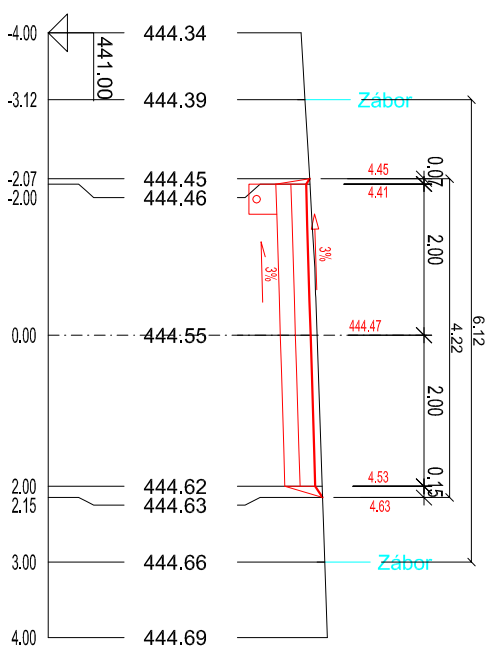
4 - KM 0.155



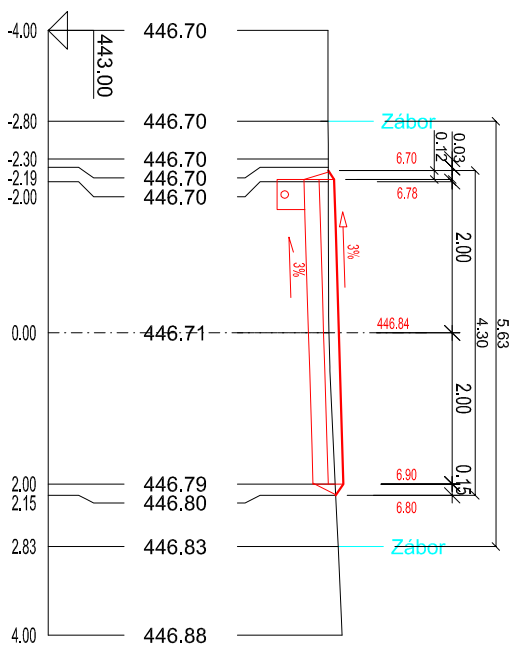
## 7 - KM 0.305



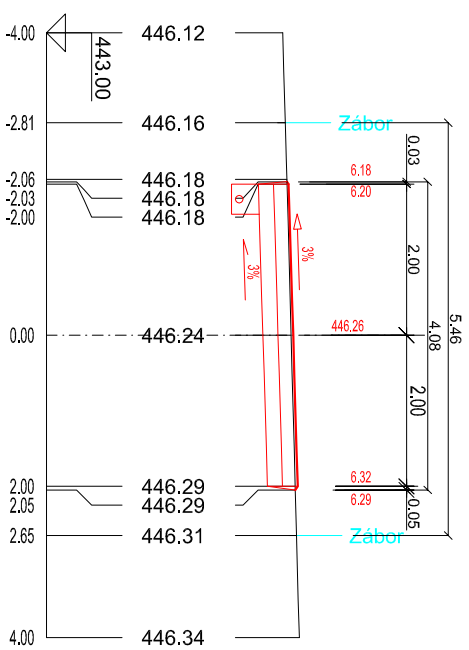
## 2 - KM 0.055



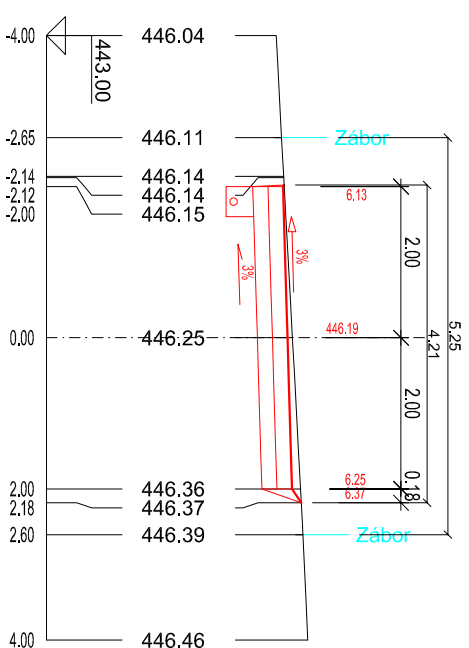
5 - KM 0.205



## 3 - KM 0.105



## 6 - KM 0.255




Legenda:

OBVOD

---

## ZÁBOR

*Kōtoubāno v mm*

|  |   |  |            |
|--|---|--|------------|
| VYPRACOVANÉ  |   | ZODP. PROJEKTANT   |            |
| Ing. Edita H.Klofardová  |   | Ing. Jarmila Vaceřová  |            |
| OBEČ:  | Morašice  | KRAJ:  | Paroubický |
| STÁTNÍ POZEMKOVÝ ÚŘAD:   |   |  |            |
| pobočka Chrudim  |   |  |            |
| AKCE:  | Komplexní pozemková úprava<br>v k.ú. Zbýhňovice   |  |            |
| OBSAH:   | DOKUMENTACE TECHNIKÉHO ŘEŠENÍ<br>PŘÍČNÉ REZY VC10 |  |            |
| <br><b>GEOVAP</b> |   | Čechovo náb. 1790, 530 03 Pardubice<br>tel.: 466024111 fax: 46667314 |            |
| DATUM  |   | 2/2018   |            |
| FORMÁT   |   | 2A4  |            |
| ZAK. ČÍSLO   |   | 184/2016   |            |
| MĚŘÍTKO  |   | 1 : 100  |            |
| PŘÍLOHA  |   | F.6.4  |            |